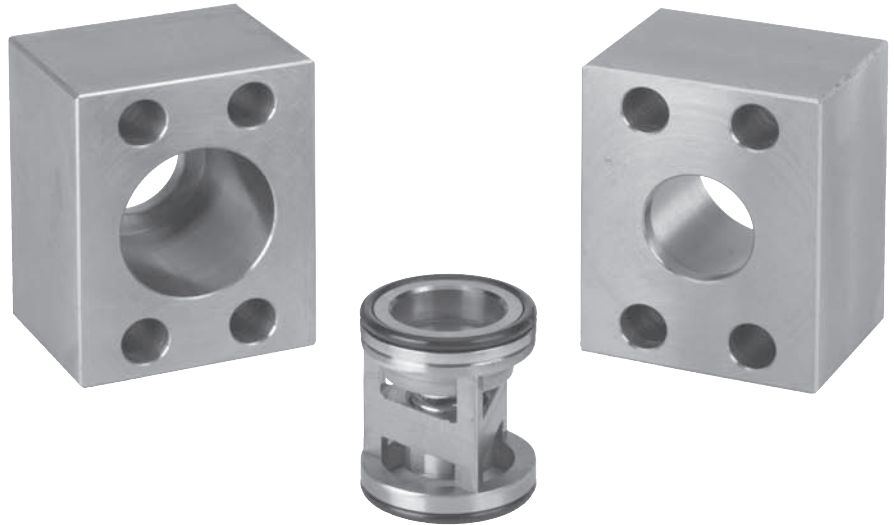


Inserta Products, Inc.

CHECK VALVE BODIES FLANGE TYPE

INSERTA® ICF Check Valve Bodies, Flange type, provide a simple means to install a Check Valve or a Fixed Orifice Flow Control Valve, etc., in a piping system that uses SAE 4-Bolt flanges. These bodies accept the **INSERTA® ICS Slip-In Type Check Valves**, which should be ordered separately. These valve assemblies can be installed between pumps, valves, or manifolds and flange retainers in an effective manner with threaded fasteners. Pipe connections are eliminated and the joints are O-ring sealed. The slip-in valves can be installed with the free flow in either direction.



INSERTA® ICF Check Valve Bodies, Flange Type, are all steel construction.

ORDERING INFORMATION

ICF - B- 61 12 - L

**INSERTA®
CHECK VALVE BODY,
FLANGE TYPE**

DESIGN CODE

BODIES ARE DESIGN B EXCEPT
THE LONG BODIES IN -16, -20
AND -24 SIZES WHICH ARE
DESIGN C

MOUNTING PATTERN

U461 = UNIFIED CODE U61 4-BOLT
61 = SAE CODE 61
62 = SAE CODE 62

**OPTIONAL LONG BODY
REQUIRED FOR 60 & 90 PSI
(OMIT FOR STANDARD BODY)**

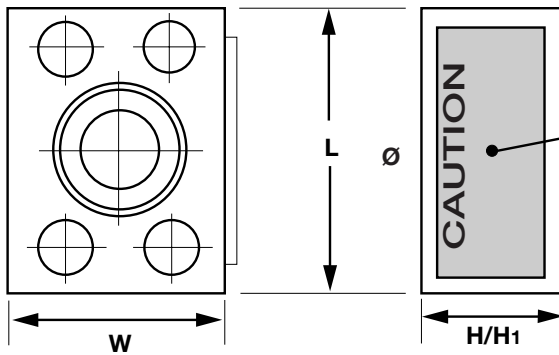
NOMINAL SIZE

02 = 1/8	08 = 1/2	20 = 1 1/4
04 = 1/4	12 = 3/4	24 = 1 1/2
06 = 3/8	16 = 1	

Inserta Products, Inc.
Blue Bell, Pa. 19422

**CHECK VALVE
BODIES
FLANGE TYPE**





CAUTION

Care must be exercised when installing check valve to insure the free flow path of the slip-in check valve is correct for the system in which it is installed.

CODE 61 AND CODE U61

MOUNTING PATTERN - SIZE	NOMINAL SIZE	NOM. FLOW RATE (GPM)	W	H	H ₁ *	L	SLIP-IN CHECK VALVE PART NO.
U46102	1/8	2	.62	.69	.88	1.00	ICS-C-02-***
U46104	1/4	5	.75	.75	1.00	1.25	ICS-C-04-***
U46106	3/8	10	.88	.88	1.00	1.50	ICS-C-06-***
6108	1/2	24	1.50	1.00	1.50	2.12	ICS-C-12-***
6112	3/4	45	1.87	1.25	1.75	2.50	ICS-C-16-***
6116	1	75	2.25	2.00	2.75	2.75	ICS-C-20-***
6120	1 1/4	110	2.50	2.25	2.75	3.00	ICS-C-24-***
6124	1 1/2	200	3.50	3.25	4.00	4.00	ICS-C-32-***

CODE 62

MOUNTING PATTERN - SIZE	NOMINAL SIZE	NOM. FLOW RATE (GPM)	W	H	H ₁ *	L	SLIP-IN CHECK VALVE PART NO.
6208	1/2	24	1.50	1.25	1.50	2.25	ICS-C-12-***
6212	3/4	45	2.00	1.50	1.75	2.75	ICS-C-16-***
6216	1	75	2.50	2.00	2.75	3.00	ICS-C-20-***
6220	1 1/4	110	2.75	2.25	2.75	3.50	ICS-C-24-***
6224	1 1/2	200	4.00	3.25	4.00	4.50	ICS-C-32-***

NOMINAL FLOW RATINGS SHOWN ARE WITH A Δ P OF 20 TO 40 PSI WITH ICS CHECK VALVE INSTALLED. In applications where the valve is subject to sudden shock opening or closing (e.g. Accumulator System), the nominal rated flow must not be exceeded and a minimum cracking pressure of 15 PSI is required. THE PRESSURE RATING OF THESE VALVE ASSEMBLIES MAY BE LIMITED BY THE ICS CHECK INSERT. REFER TO THE ICS DATA SHEET.

OPERATING MEDIUM:
HYDRAULIC FLUID
VISCOSITY RANGE:
50 SSU TO 2000 SSU
CRACKING PRESSURE:
3 PSI, 7 PSI, 15 PSI (STANDARD) OR 30 PSI.
* 60 PSI & 90 PSI, OPTIONAL WITH LONGER BODY.
TEMPERATURE RANGE:
-22° F (-30° C) TO 175° F (80° C)

Inserta Products, Inc. Blue Bell, Pa. 19422	CHECK VALVE BODIES FLANGE TYPE	
--	---------------------------------------	--